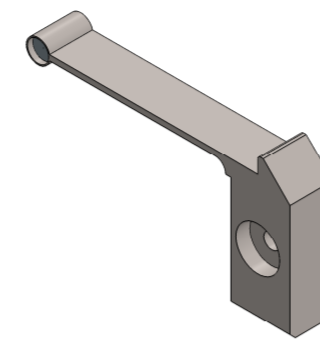
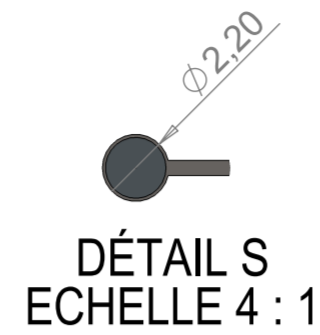


Single aperture

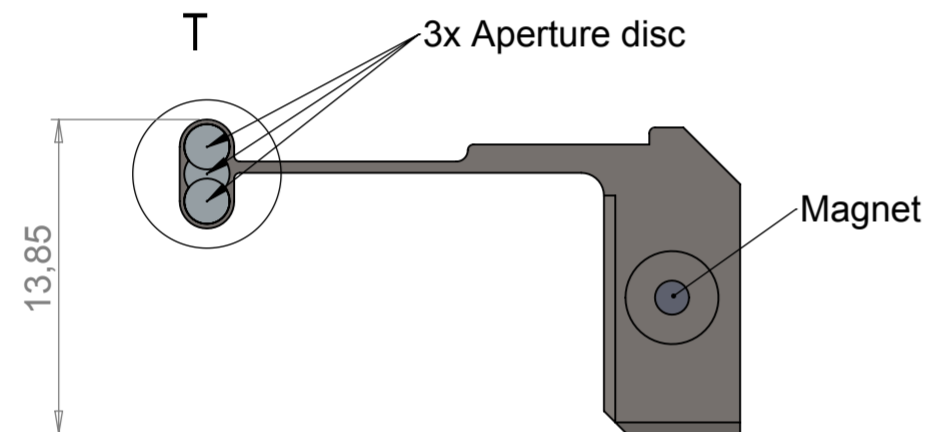


MD2 type	Ref.
MD2 standard	1..
MD2 mirrored	2..

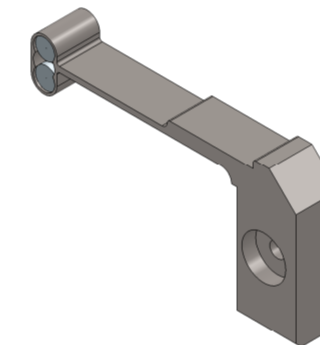
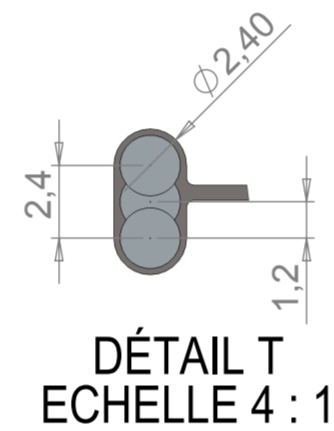
Aperture system type	Ref.
Single aperture	.10
Triple aperture	.30
Penta aperture	.50

MD2 type - Aperture system type	APERTURE SYSTEM Ref .	Aperture diameter(s)* D (µm)
Single aperture: 110	110-005	5
Triple aperture: 130	130-005-010-020	5-10-20
Penta aperture: 150	150-005-010-020-050-100-150	5-10-20-50-100-150

*Others, on request.



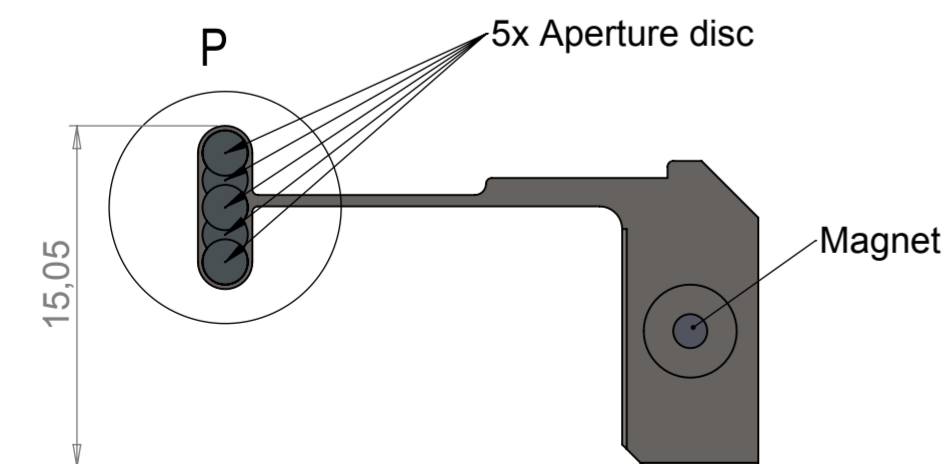
Triple aperture



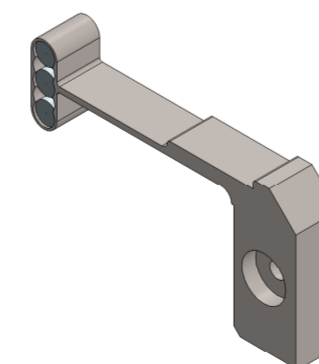
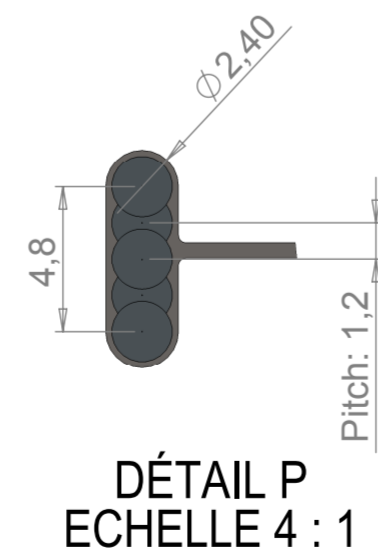
APERTURE SYSTEM	
Ref.	
130	005 - 010 - 020

MD2 type - Aperture system type

Aperture diameter



Penta aperture



Rep	Nb	Contrôle après montage	Ti	Présence de colle
C		NOTA	Matière	Observations
B				
A	23/10/15	First Issue		
Ind.	Date	Modification		
Service : Instrum.Scientif		Tol. gén. ISO:	Js9	
Verif : RS		Tol. gén. Rugosité	Ra 1.6	
Dess: CHU		Date: 23/10/2015	A2	
Ech: 3:1		Sous Ens: Organs		
TITRE:				Projet: MD2
Aperture system MD2				N°plan
				CME-MD2-1030-A

