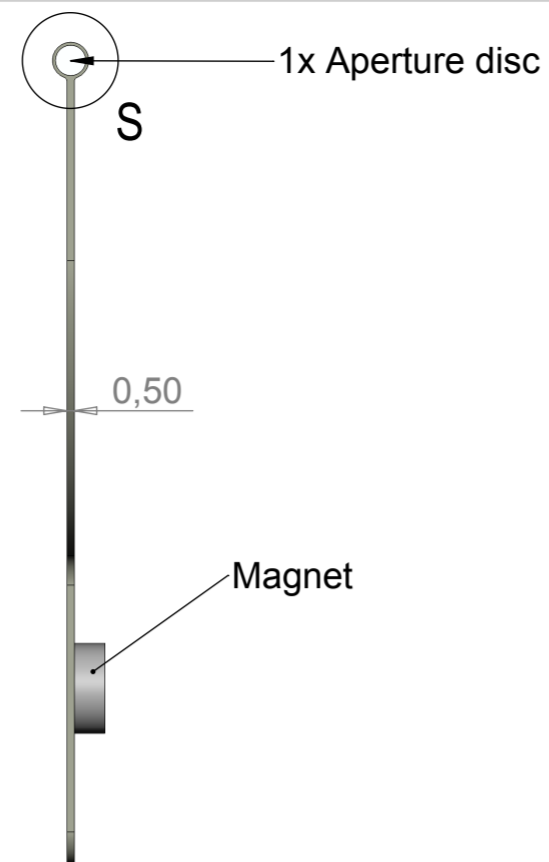


Single aperture

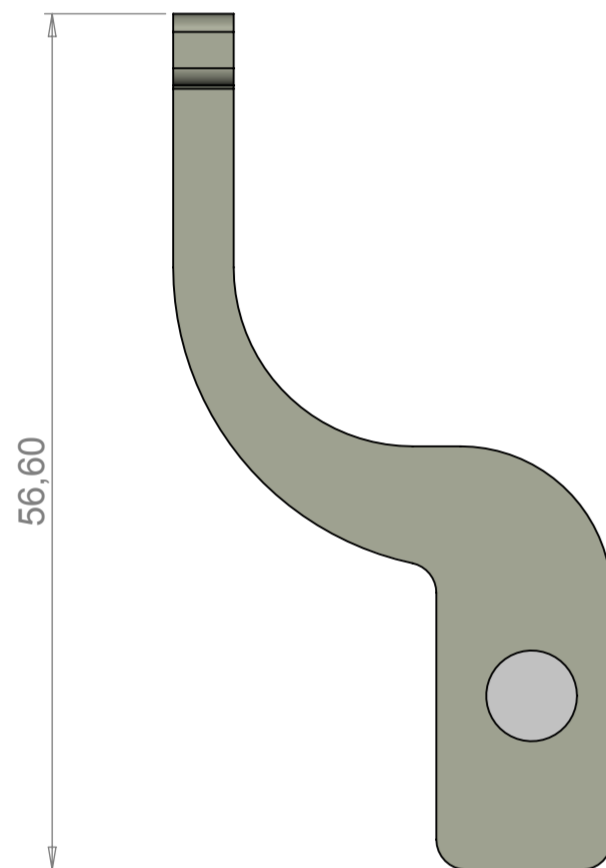


MD2S or MD3 type	Ref.
MD2S or MD3 standard	3..
MD2S or MD3 mirrored	4..

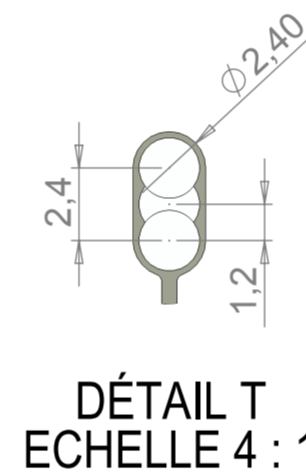
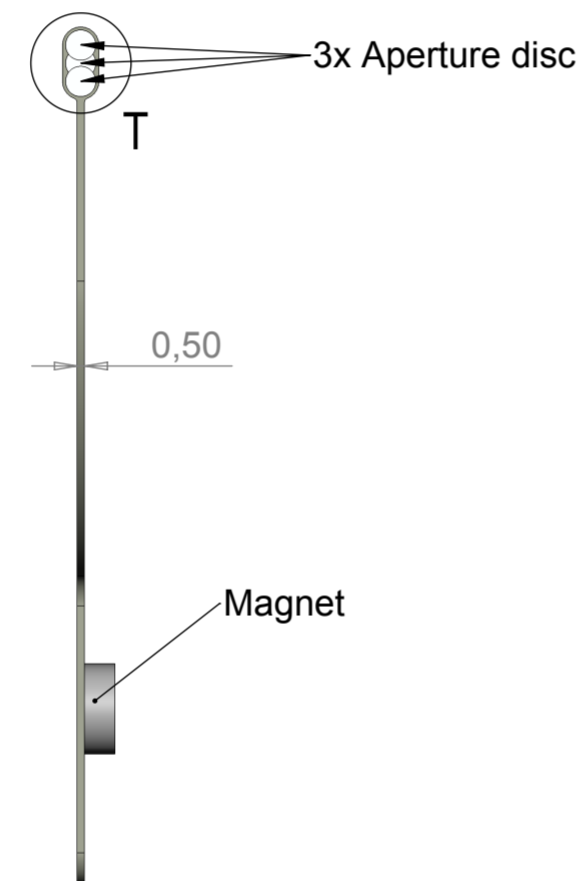
Aperture system type	Ref.
Single aperture	.10
Triple aperture	.30
Penta aperture	.50

MD2S or MD3 type - Aperture system type	APERTURE SYSTEM Ref .	Aperture diameter(s)* D (µm)
Single aperture: 310	310-005	5
Triple aperture: 330	330-005-010-020	5-10-20
Penta aperture: 350	350-005-010-020-050-100-150	5-10-20-50-100-150

*Others, on request.



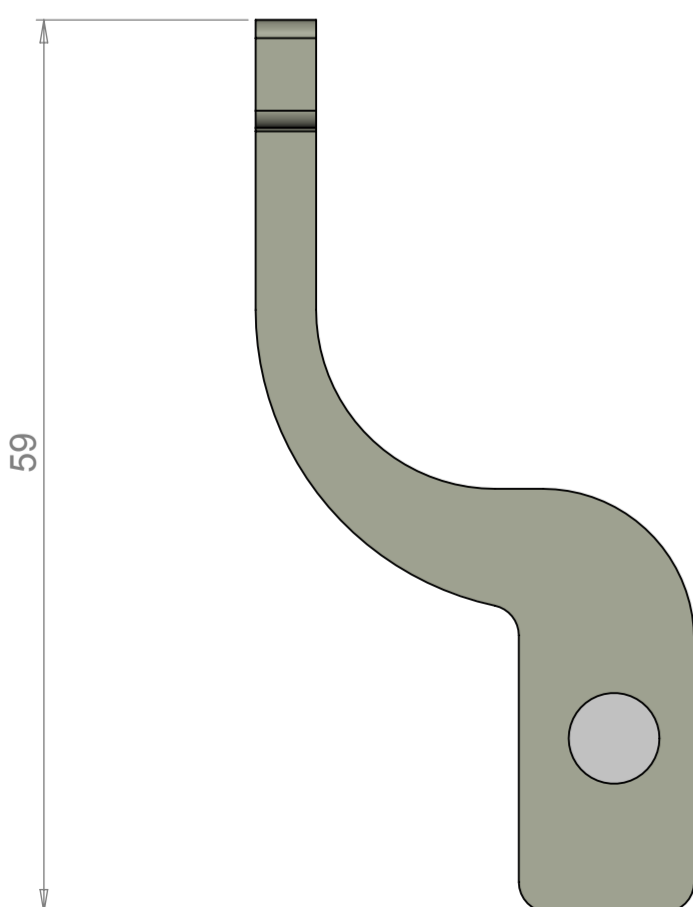
Triple aperture



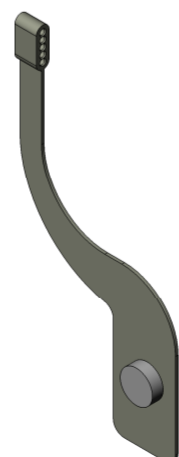
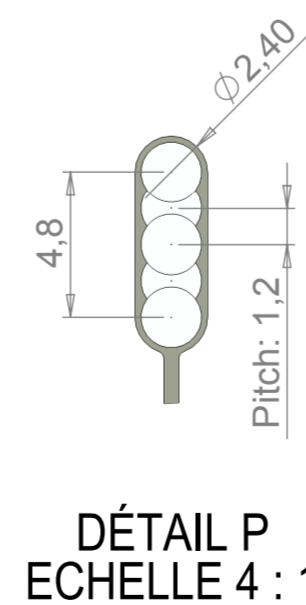
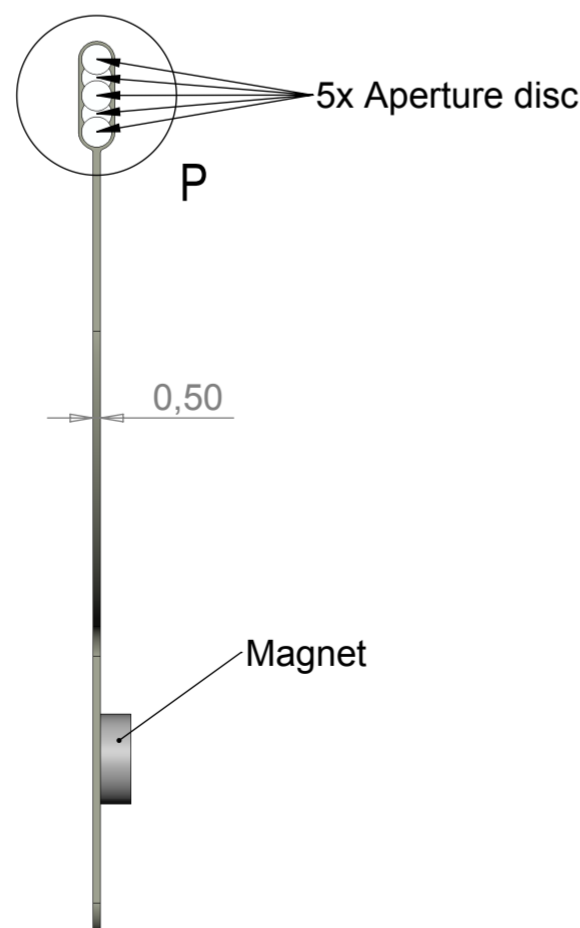
APERTURE SYSTEM	
Ref.	
330	005 - 010 - 020

MD2S or MD3 type - Aperture system type

Aperture diameter



Penta aperture



Rep	Nb	Contrôle après montage	WC	Présence de colle
		NOTA	Matière	Observations
C				
B				
A	23/10/15	First Issue		
Ind.	Date	Modification		
Service : Instrum.Scientif		Tol. gén. ISO:	Js9	
Verif : RS		Tol. gén. Rugosité	Ra 1.6	
Dess: CHU		Date: 23/10/2015	A2	
Ech: 2:1	Sous Ens: Organs			
TITRE:				
Aperture system MD2S - MD3				
				Projet: MD2S - MD3
				N°plan
				CME-MD2S-1030-A



Advanced Research Instrumentation for Neutrons & X-rays
MAATEL S.A.S.
 259 rue du Rocher de Lorzier
 38430 MOIRANS FRANCE